



VOKEY DESIGN **SM4** WEDGES



PRECISE SHOTS REQUIRE PRECISION TECHNOLOGY.

Vokey SM4 wedges, with advanced Spin Milled technology, deliver maximum spin and shot control that enable players to hit it close. Master Craftsman Bob Vokey has covered every detail in this fourth generation of Spin Milled design wedges. His experience working with the best players in the world has resulted in a line that represents his most extensive range of options to date, including more choices in loft, bounce, and tour-proven sole grinds. Visit Vokey.com and learn more about the science of hitting it close.

PRECISE, INDIVIDUALLY CUT,
100% INSPECTED GROOVES

MACHINE CUT FACE

PRECISE MILLED MICRO
EDGES FOR MAXIMUM
CONFORMING SURFACE
ROUGHNESS

GROOVE EDGE GEOMETRY
AT THE CONFORMING LIMIT

LOCALIZED HEAT
TREATMENT FOR
GROOVE DURABILITY

TIGHTER GROOVE
SPACING TO MAXIMIZE SPIN

MORE WEDGES.

MORE WAYS TO HIT IT CLOSE.



50.08

GAP
WEDGE



Effective Bounce: 8°
Sole Width: Medium
Sole Camber: Slightly Enhanced
Sole Grind: Full

50.12

GAP
WEDGE



Effective Bounce: 12°
Sole Width: Medium
Sole Camber: Slightly Enhanced
Sole Grind: Full

52.08

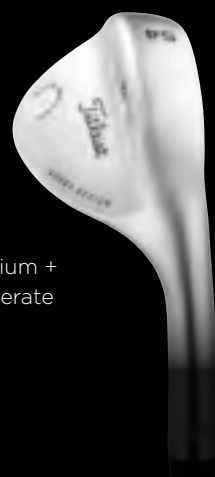
GAP
WEDGE



Effective Bounce: 8°
Sole Width: Medium
Sole Camber: Slightly Enhanced
Sole Grind: Full

54.14

SAND
WEDGE



Effective Bounce: 14°
Sole Width: Medium +
Sole Camber: Moderate
Sole Grind: Full

56.08

SAND
WEDGE



Effective Bounce: 8°
Sole Width: Narrow
Sole Camber: Moderate
Sole Grind: Full

56.11

SAND
WEDGE



Effective Bounce: 11°
Sole Width: Narrow Forward
Bounce Surface
Sole Camber: Moderate
Sole Grind: M

58.12

SAND
WEDGE



Effective Bounce: 12°
Sole Width: Narrow Forward
Bounce Surface
Sole Camber: Reduced
Sole Grind: M

60.04

LOB
WEDGE



Effective Bounce: 4°
Sole Width: Narrow Forward
Bounce Surface
Sole Camber: Reduced
Sole Grind: L

60.07

LOB
WEDGE



Effective Bounce: 7°
Sole Width: Medium
Sole Camber: Moderate
Sole Grind: S

46.08

PITCHING
WEDGE



Effective Bounce: 8°
Sole Width: Medium
Sole Camber: Slightly Enhanced
Sole Grind: Full

48.06

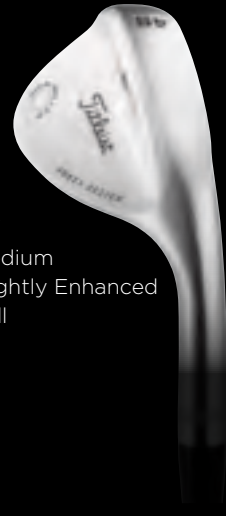
PITCHING
WEDGE



Effective Bounce: 6°
Sole Width: Medium
Sole Camber: Slightly Enhanced
Sole Grind: Full

48.10

PITCHING
WEDGE



Effective Bounce: 10°
Sole Width: Medium
Sole Camber: Slightly Enhanced
Sole Grind: Full

52.12

GAP
WEDGE



Effective Bounce: 12°
Sole Width: Medium
Sole Camber: Slightly Enhanced
Sole Grind: Full

54.08

SAND
WEDGE



Effective Bounce: 8°
Sole Width: Narrow
Sole Camber: Moderate
Sole Grind: Full

54.11

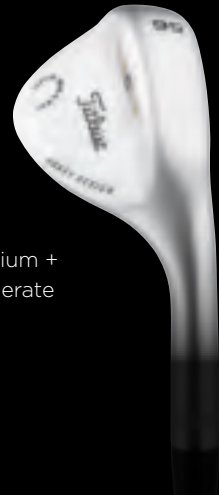
SAND
WEDGE



Effective Bounce: 11°
Sole Width: Narrow Forward
Bounce Surface
Sole Camber: Moderate
Sole Grind: M

56.14

SAND
WEDGE



Effective Bounce: 14°
Sole Width: Medium +
Sole Camber: Moderate
Sole Grind: Full

58.06

SAND
WEDGE



Effective Bounce: 6°
Sole Width: Narrow Forward
Bounce Surface
Sole Camber: Reduced
Sole Grind: L

58.09

SAND
WEDGE



Effective Bounce: 9°
Sole Width: Medium
Sole Camber: Moderate
Sole Grind: S

60.10

LOB
WEDGE



Effective Bounce: 10°
Sole Width: Narrow Forward
Bounce Surface
Sole Camber: Moderate
Sole Grind: M

62.07

LOB
WEDGE



Effective Bounce: 7°
Sole Width: Narrow Forward
Bounce Surface
Sole Camber: Reduced
Sole Grind: T

64.07

LOB
WEDGE



Effective Bounce: 7°
Sole Width: Narrow Forward
Bounce Surface
Sole Camber: Reduced
Sole Grind: T

VOKEY DESIGN® SPIN MILLED™ SM4 WEDGES

The new SM4 wedges from master craftsman Bob Vokey feature tour-validated shapes and sole grinds with enhanced Spin Milled face technology for maximum spin and even greater shot control.



MAXIMUM CONFORMING SPIN through tour extreme grooves that feature 100% inspected, tight tolerance, aggressive groove edges at the limits allowed by the Rules of Golf.



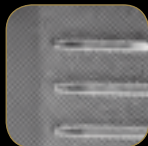
IMPROVED TURF & SAND PERFORMANCE through a neutral entry angle, progressive leading edge and tour validated sole designs taken straight from Bob's tour grinds.



SUPERIOR FULL SHOT CONTROL from precise individually cut Spin Milled grooves.



MORE CHOICES of models, lofts, bounce and sole grind options all designed to help you hit it close.



MAXIMUM PARTIAL SHOT SPIN and control from the milled micro edge face texture that provides grip on less than full shots.



IMPROVED APPEARANCE at address with a slightly larger teardrop profile and CAD generated progressive leading edge, toe profile and topline radius through the range of lofts.



DURABLE GROOVES from a localized heat treatment that preserves the precise milled grooves and micro edges.



GREAT LOOKS with three distinct finish options: Tour Chrome, Black Nickel and Oil Can.



SPECIFICATIONS

	MODEL	LOFT	LIE	BOUNCE	GRIND	LENGTH	SWING WEIGHT	FINISHES		
								TOUR CHROME	BLACK NICKEL	OIL CAN**
PITCHING	46.08	46°	64°	8° (Mid)	F	35.75"	D3	RH/LH	RH	RH/LH
	48.06	48°	64°	6° (Mid)	F	35.75"	D3	RH/LH	RH	RH/LH
	48.10	48°	64°	10° (High)	F	35.75"	D3	RH	RH	RH
GAP	50.08	50°	64°	8° (Mid)	F	35.50"	D3	RH/LH	RH	RH/LH
	50.12	50°	64°	12° (High)	F	35.50"	D3	RH	RH	RH
	52.08	52°	64°	8° (Mid)	F	35.50"	D3	RH/LH	RH	RH/LH
	52.12	52°	64°	12° (High)	F	35.50"	D3	RH	RH	RH
SAND	54.08	54°	64°	8° (Low)	F	35.25"	D5	RH/LH*	RH	RH/LH*
	54.11	54°	64°	11° (Mid)	M	35.25"	D5	RH/LH	RH	RH/LH
	54.14	54°	64°	14° (High)	F	35.25"	D5	RH/LH*	RH	RH/LH*
	56.08	56°	64°	8° (Low)	F	35.25"	D5	RH/LH*	RH	RH/LH*
	56.11	56°	64°	11° (Mid)	M	35.25"	D5	RH/LH	RH	RH/LH
	56.14	56°	64°	14° (High)	F	35.25"	D5	RH/LH*	RH	RH/LH*
	58.06	58°	64°	6° (Low)	L	35.00"	D5	RH/LH*	RH	RH/LH*
	58.09	58°	64°	9° (Mid)	S	35.00"	D5	RH/LH	RH	RH/LH
	58.12	58°	64°	12° (High)	M	35.00"	D5	RH/LH*	RH	RH/LH*
	LOB	60.04	60°	64°	4° (Low)	L	35.00"	D5	RH/LH*	RH
60.07		60°	64°	7° (Mid)	S	35.00"	D5	RH/LH	RH	RH/LH
60.10		60°	64°	10° (High)	M	35.00"	D5	RH/LH*	RH	RH/LH*
62.07		62°	64°	7° (Mid)	T	34.75"	D5	RH/LH	RH	RH/LH
64.07		64°	64°	7° (Mid)	T	34.75"	D5	RH/LH	RH	RH/LH

*Available Spring 2012

**Oil Can LH Custom Only

STANDARD SHAFT: DYNAMIC GOLD S200



STANDARD GRIP: TITLEIST TOUR VELVET



SOLE GRINDS



F

Full sole with moderate camber and small trailing edge ribbon.



S

Full sole with trailing edge ribbon and moderate heel relief.



M

Crescent-shaped forward bounce surface with leading edge and trailing edge relief.



T

Dual bounce sole with narrow forward bounce surface, wider trailing bounce surface and reduced camber.



L

Crescent-shaped sole with narrow forward bounce surface and very little camber.

CUSTOM OPTIONS

TOUR CHROME

LENGTH	LIE	LOFT
+2" / -1"	+2° / -2°	+1° / -1°

BLACK NICKEL

LENGTH	LIE	LOFT
+2" / -1"	+2° / -2°	+1° / -1°

OIL CAN

LENGTH	LIE	LOFT
+2" / -1"	+4° / -4°	+2° / -2°

Titleist®

For more information, please call our consumer hotline at 1-888-324-4766.
©2011 Acushnet Company. All rights reserved.